

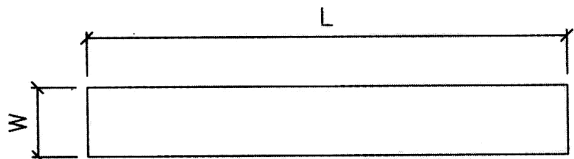
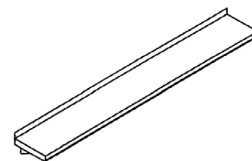
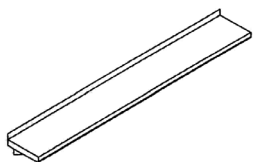


LAMBERTSON INDUSTRIES

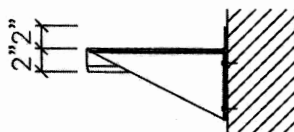
HIGH-QUALITY STAINLESS STEEL

POT RACKS SCHEMATICS

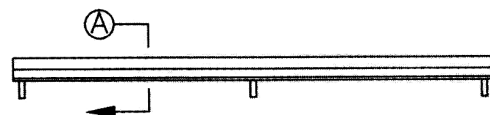
LWM-2 SERIES WALL SHELVES WITH THREE SIDES TURNED DOWN



PLAN VIEW



SECTION VIEW



ELEVATION VIEW

| MODEL | L | W | WEIGHT | MODEL | L | W | WEIGHT | MODEL | L | W | WEIGHT |
|----------|-----|-----|---------|----------|-----|-----|---------|----------|------|-----|---------|
| LWM-2-10 | 84" | 10" | 28 LBS. | LWM-2-10 | 96" | 10" | 32 LBS. | LWM-2-10 | 108" | 10" | 36 LBS. |
| LWM-2-12 | | 12" | | LWM-2-12 | | 12" | | LWM-2-12 | | 12" | |
| LWM-2-14 | | 14" | | LWM-2-14 | | 14" | | LWM-2-14 | | 14" | |
| LWM-2-16 | | 16" | | LWM-2-16 | | 16" | | LWM-2-16 | | 16" | |

| MODEL | L | W | WEIGHT | MODEL | L | W | WEIGHT |
|----------|------|-----|---------|----------|------|-----|---------|
| LWM-2-10 | 120" | 10" | 40 LBS. | LWM-2-10 | 132" | 10" | 44 LBS. |
| LWM-2-12 | | 12" | | LWM-2-12 | | 12" | |
| LWM-2-14 | | 14" | | LWM-2-14 | | 14" | |
| LWM-2-16 | | 16" | | LWM-2-16 | | 16" | |

NOTES

- ▶ SHELF — 16 GAUGE TYPE 304 STAINLESS STEEL WITH 2" TURN UP AT REAR AND SIDES AND 2" TURN DOWN ALONG FRONT EDGE.
- ▶ WALL MOUNTING BRACKETS — 14 GAUGE TYPE 304 STAINLESS STEEL SEALED TO SHELF WITH SILICONE AND PRE-PUNCHED FOR ANCHORAGE TO WALL (MOUNTING HARDWARE SUPPLIED BY OTHERS). BRACKETS SHIPPED LOOSE FOR MOUNTING AS FIELD REQUIRES. (ALL SHELF MODELS LISTED ON THIS PAGE REQUIRE TWO (2) WALL MOUNTING BRACKETS PER SHELF.

1335 ALEXANDRIA COURT
SPARKS, NV 89434

LAMBERTSON INDUSTRIES, INC.
PHONE 775 · 857 · 1100
TOLL-FREE 800 · 548 · 3324
FAX 775 · 857 · 3289

WWW.LAMBERTSON.COM
SALES@LAMBERTSON.COM

