

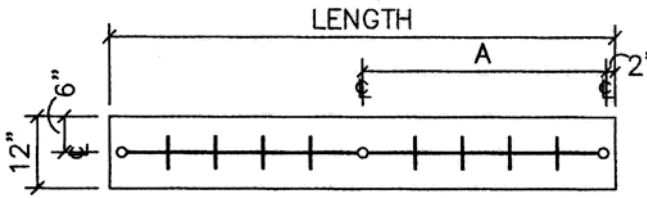
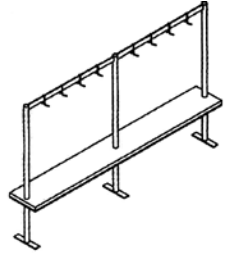
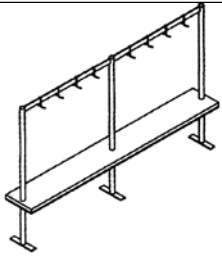


LAMBERTSON INDUSTRIES

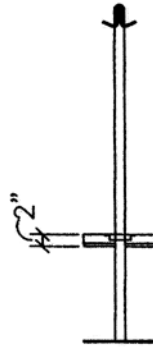
HIGH - QUALITY STAINLESS STEEL

POT RACKS SCHEMATICS

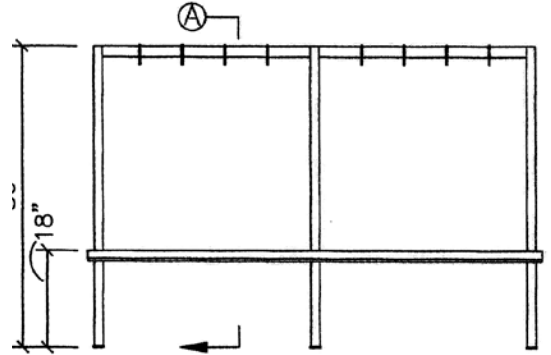
TABLE MOUNTED POT RACK WITH SHELF STPRS / SINGLE LINE MODELS WITH SHELF



PLAN VIEW



SECTION VIEW



ELEVATION VIEW

MODEL	LENGTH	A	WEIGHT
STPR-S-84	84"	40"	52 LBS.
STPR-S-96	96"	46"	58" LBS.
STPR-S-108	108"	52"	64" LBS.
STPR-S-120	120"	58"	70" LBS.

NOTES

- ▶ UPRIGHTS — 1-5/8" O.D. TUBING WITH TOP CAPPED.
- ▶ POT RACK RAILS — 1-5/8" O.D. FLATTENED TUBING FULLY WELDED TO WALL MOUNTING BRACKETS.
- ▶ MOUNTING PLATE — HEAVY GAUGE PLATE FULLY WELDED TO UPRIGHTS AND PRE-PUNCHED FOR MOUNTING TO TABLE. MOUNTING HARDWARE SUPPLIED BY OTHERS.
- ▶ OVERSHELF — 16 GAUGE MATERIAL WITH 2" TURN DOWN ON ALL SIDES. SHELF WELDED TO VERTICAL SUPPORTS.
- ▶ HORIZONTAL MEMBER — FLATTENED 1-5/8" O.D. TUBING WITH ENDS FULLY WELDED TO UPRIGHTS. STAINLESS STEEL DOUBLE SIDED SLIDING POT HOOKS PROVIDED (ONE PER FOOT PER RAIL).

LAMBERTSON INDUSTRIES • 1335 ALEXANDRIA COURT • SPARKS, NV 89434

PHONE: 775-857-1100 • FAX: 775-857-3289 • TOLL-FREE: 800-548-3324

