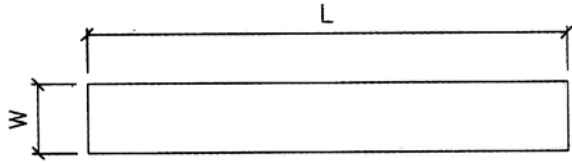
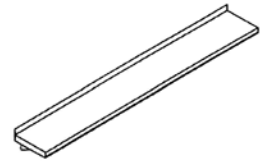
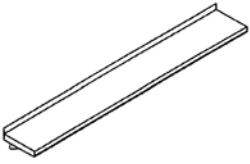




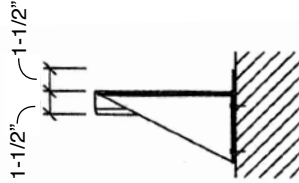
# LAMBERTSON INDUSTRIES

HIGH - QUALITY STAINLESS STEEL

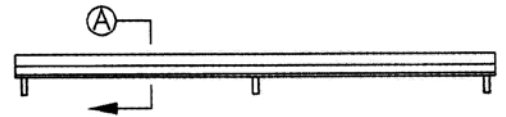
## POT RACKS SCHEMATICS LWM-2 SERIES WALL SHELF THREE SIDES TURNED DOWN



PLAN VIEW



SECTION VIEW



ELEVATION VIEW

| MODEL    | L   | W   | WEIGHT  | MODEL    | L   | W   | WEIGHT  | MODEL    | L    | W   | WEIGHT  |
|----------|-----|-----|---------|----------|-----|-----|---------|----------|------|-----|---------|
| LWM-2-10 | 84" | 10" | 28 LBS. | LWM-2-10 | 96" | 10" | 32 LBS. | LWM-2-10 | 108" | 10" | 36 LBS. |
| LWM-2-12 |     | 12" |         | LWM-2-12 |     | 12" |         | LWM-2-12 |      | 12" |         |
| LWM-2-14 |     | 14" |         | LWM-2-14 |     | 14" |         | LWM-2-14 |      | 14" |         |
| LWM-2-16 |     | 16" |         | LWM-2-16 |     | 16" |         | LWM-2-16 |      | 16" |         |

| MODEL    | L    | W   | WEIGHT  | MODEL    | L    | W   | WEIGHT  |
|----------|------|-----|---------|----------|------|-----|---------|
| LWM-2-10 | 120" | 10" | 40 LBS. | LWM-2-10 | 132" | 10" | 44 LBS. |
| LWM-2-12 |      | 12" |         | LWM-2-12 |      | 12" |         |
| LWM-2-14 |      | 14" |         | LWM-2-14 |      | 14" |         |
| LWM-2-16 |      | 16" |         | LWM-2-16 |      | 16" |         |

### NOTES

- ▶ SHELF — 16 GAUGE TYPE 304 STAINLESS STEEL WITH 1-1/2" TURN UP AT REAR AND SIDES AND 1-1/2" TURN DOWN ALONG FRONT EDGE.
- ▶ WALL MOUNTING BRACKETS — 14 GAUGE TYPE 304 STAINLESS STEEL SEALED TO SHELF WITH DOUBLE-SIDED TAPE AND PRE-PUNCHED FOR ANCHORAGE TO WALL (MOUNTING HARDWARE SUPPLIED BY OTHERS). BRACKETS SHIPPED LOOSE FOR MOUNTING AS FIELD REQUIRES. (ALL SHELF MODELS LISTED ON THIS PAGE REQUIRE THREE (3) WALL MOUNTING BRACKETS PER SHELF.

LAMBERTSON INDUSTRIES • 1335 ALEXANDRIA COURT • SPARKS, NV 89434

PHONE: 775-857-1100 • FAX: 775-857-3289 • TOLL-FREE: 800-548-3324

