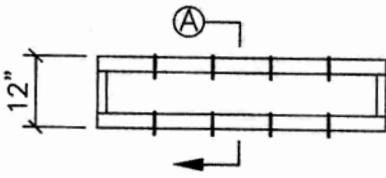
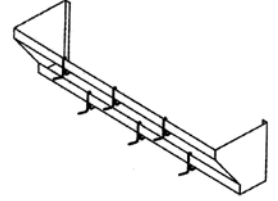
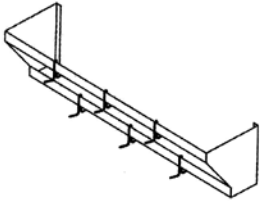




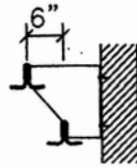
# LAMBERTSON INDUSTRIES

HIGH - QUALITY STAINLESS STEEL

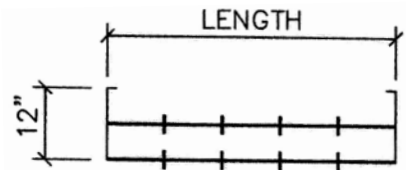
## POT RACKS SCHEMATICS WALL MOUNTED POT RACK DWMPR / DOUBLE LINE MODELS



PLAN VIEW



SECTION VIEW



ELEVATION VIEW

MODEL	LENGTH	WEIGHT
DWMPR-48	48"	26 LBS.
DWMPR-60	60"	30 LBS.
DWMPR-72	72"	34 LBS.

### NOTES

- ▶ POT RACK RAILS — 1-5/8" O.D. FLATTENED TUBING FULLY WELDED TO WALL MOUNTING BRACKETS..
- ▶ WALL MOUNTING BRACKETS — 14 GAUGE MATERIAL WITH MOUNTING FLANGE PRE-PUNCHED TO ALLOW FOR FASTENING TO WALL (MOUNTING HARDWARE SUPPLIED BY OTHERS).
- ▶ POT HOOKS — STAINLESS STEEL DOUBLE SIDED SLIDING POT HOOKS FURNISHED. (ONE PER FOOT PER RAIL)

LAMBERTSON INDUSTRIES • 1335 ALEXANDRIA COURT • SPARKS, NV 89434

PHONE: 775-857-1100 • FAX: 775-857-3289 • TOLL-FREE: 800-548-3324

