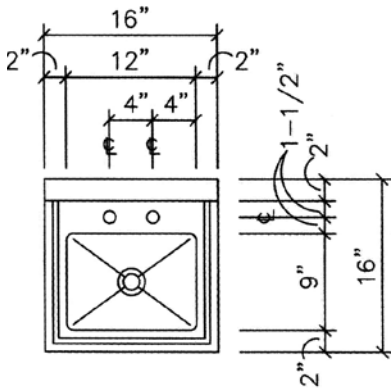
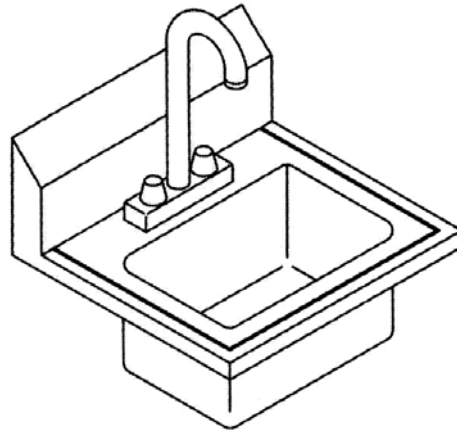




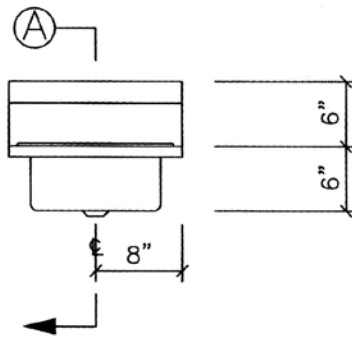
# LAMBERTSON INDUSTRIES

HIGH-QUALITY STAINLESS STEEL  
HAND SINK SCHEMATICS

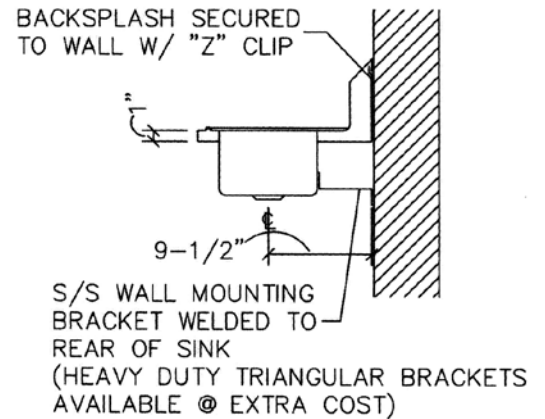
## HS-9-D



PLAN VIEW



SECTION VIEW



ELEVATION VIEW

### NOTES

- ▶ TOP — 16 GAUGE TYPE 304 STAINLESS STEEL WITH INTEGRALLY FORMED BACKSPLASH AND 1" TURN DOWN ON ALL THREE SIDES. DECK IS PUNCHED WITH 1-1/8" FAUCET HOLES 4" O.C.
- ▶ SINK — 16 GAUGE TYPE 304 STAINLESS STEEL ALL WELDED CONSTRUCTION. ALL VERTICAL AND HORIZONTAL CORNERS WITH 5/8" RADIUS COVE. BOTTOM OF TUBS ARE PITCHED TOWARD DIE STAMPED CENTER DRAIN OPENING.
- ▶ GOOSENECK FAUCET AND DRAIN FITTING PROVIDED BY LAMBERTSON.

LAMBERTSON STAINLESS STEEL PRODUCTS ARE  APPROVED AND MEET STANDARD #2-DO21814

LAMBERTSON INDUSTRIES • 1335 ALEXANDRIA COURT • SPARKS, NV 89434

PHONE: 775-857-1100 • FAX: 775-857-3289 • TOLL-FREE: 800-548-3324

