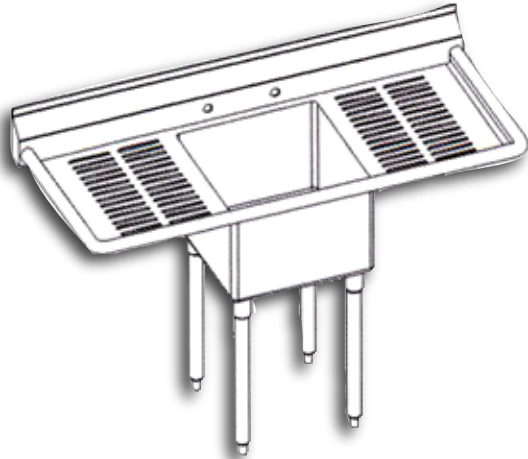




LAMBERTSON INDUSTRIES

H I G H - Q U A L I T Y S T A I N L E S S S T E E L

ECONOMY LINE SINKS ONE TUB • TWO DRAIN BOARD



SPECIFICATIONS:

TOPS— 18-gauge, type 304 stainless steel, with integrally formed backsplash and sanitary roll on three sides. Backsplashes are pre-punched for required faucet holes. Drainboards are corrugated die-stamped (CDZ™ Corrugated Dry Zone) and pitched toward the sink. All joints are seam welded and all visible welds are ground smoothed and polished.

TUBS— 18-gauge, type 304 stainless steel with 3-1/2" die-stamped center drain openings. All vertical and horizontal corners minimal 5/8" radius cove. Tubs are integrally welded on tops.

LEGS— Removable 1-5/8" O.D. galvanized iron tubing legs with welded gussets and adjustable sanitary bullet-type feet. **Stainless steel legs and adjustable sanitary bullet-type feet available upon request.**

MECHANICAL:

- Water supply is 1/2" IPS Hot and Cold.
- Faucet holes are on standard 8" centers.
- Faucet height is 36-1/2" from floor.
- Waste drains are 1-1/2" IPS. Stainless Steel. 3-1/2" Basket drains are included.
- All dimensions are typical TOL ± .500

Faucets are not included

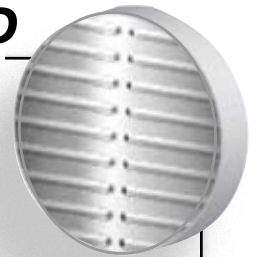
FEATURES:

- New **CDZ™ Corrugated Dry Zone**
- All one-piece welded construction
- Radius die-stamped tub bottom for better drainage
- All drainboards have integral backsplashes
- Gussets located on sink and tubs for greater support
- Turned up backsplash
- Tubs with a depth of 14", 16" and 18" are available upon request

CUSTOM SINKS

AVAILABLE UPON REQUEST!

CORRUGATED DRY ZONE™



MEETS OR EXCEEDS ALL HEALTH STANDARDS

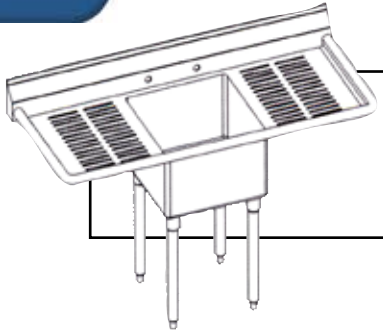
REDUCES BACTERIA AND ODOR

ALLOWS AIR AND WATER TO FLOW UNDER ALL WASHABLE ITEMS ELIMINATING SUCTION AND CROSS-CONTAMINATION.

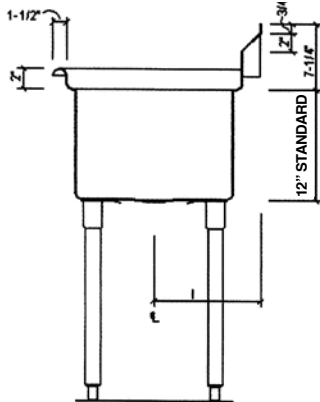
LAMBERTSON INDUSTRIES • 1335 ALEXANDRIA COURT • SPARKS, NV 89434

PHONE: 775-857-1100 • FAX: 775-857-3289 • TOLL-FREE: 800-548-3324

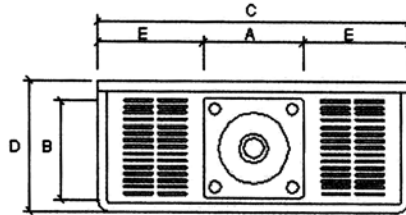




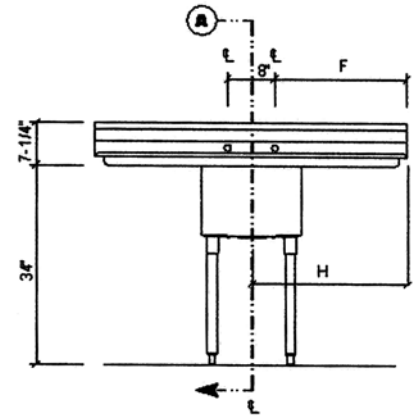
ECONOMY LINE SCHEMATICS ONE TUB / TWO DRAINBOARD



SECTION VIEW



PLAN VIEW



ELEVATION VIEW

1-TUB / TWO DRAINBOARD

MODEL	WEIGHT	A	B	C	D	E	F	G	H	I	J
EL-1-LIN-17-2D18	80 LBS.	17"	17"	53"	22½"	18"	22½"	N/A	26½"	11½"	N/A
EL-1-LIN-17-2D24	85 LBS.	17"	17"	65"	22½"	24"	28½"	N/A	32½"	11½"	N/A
EL-1-LIN-1723-2D18	80 LBS.	17"	23"	53"	28½"	18"	22½"	N/A	26½"	14½"	N/A
EL-1-LIN-1723-2D24	85 LBS.	17"	23"	65"	28½"	24"	28½"	N/A	32½"	14½"	N/A
EL-1-LIN-18-2D18	85 LBS.	18"	18"	54"	23½"	18"	23"	N/A	27"	12"	N/A
EL-1-LIN-18-2D24	90 LBS.	18"	18"	66"	23½"	24"	29"	N/A	33"	12"	N/A
EL-1-LIN-1824-2D18	90 LBS.	18"	24"	54"	29½"	18"	23"	N/A	27"	15"	N/A
EL-1-LIN-1824-2D24	95 LBS.	18"	24"	66"	29½"	24"	29"	N/A	33"	15"	N/A
EL-1-LIN-23-2D24	95 LBS.	23"	23"	71"	28½"	24"	31½"	N/A	35½"	14½"	N/A
EL-1-LIN-23-2D30	100 LBS.	23"	23"	83"	28½"	30"	37½"	N/A	41½"	14½"	N/A
EL-1-LIN-24-2D24	95 LBS.	24"	24"	72"	29½"	24"	32"	N/A	36"	15"	N/A
EL-1-LIN-24-2D30	100 LBS.	24"	24"	84"	29½"	30"	38"	N/A	42"	15"	N/A
EL-1-LIN-2923-2D30	110 LBS.	29"	23"	89"	28½"	30"	40½"	N/A	44½"	14½"	N/A
EL-1-LIN-2923-2D36	115 LBS.	29"	23"	101"	28½"	36"	46½"	N/A	50½"	14½"	N/A
EL-1-LIN-29-2D30	120 LBS.	29"	29"	89"	34½"	30"	40½"	N/A	44½"	17½"	N/A
EL-1-LIN-29-2D36	125 LBS.	29"	29"	101"	34½"	36"	46½"	N/A	50½"	17½"	N/A
EL-1-LIN-1620-2D18	85 LBS.	16"	20"	52"	25½"	18"	22"	N/A	26"	11"	N/A
EL-1-LIN-2020-2D20	90 LBS.	20"	20"	60"	25½"	20"	26"	N/A	30"	13"	N/A
EL-1-LIN-2028-2D20	95 LBS.	20"	28"	60"	33½"	20"	26"	N/A	30"	17"	N/A

